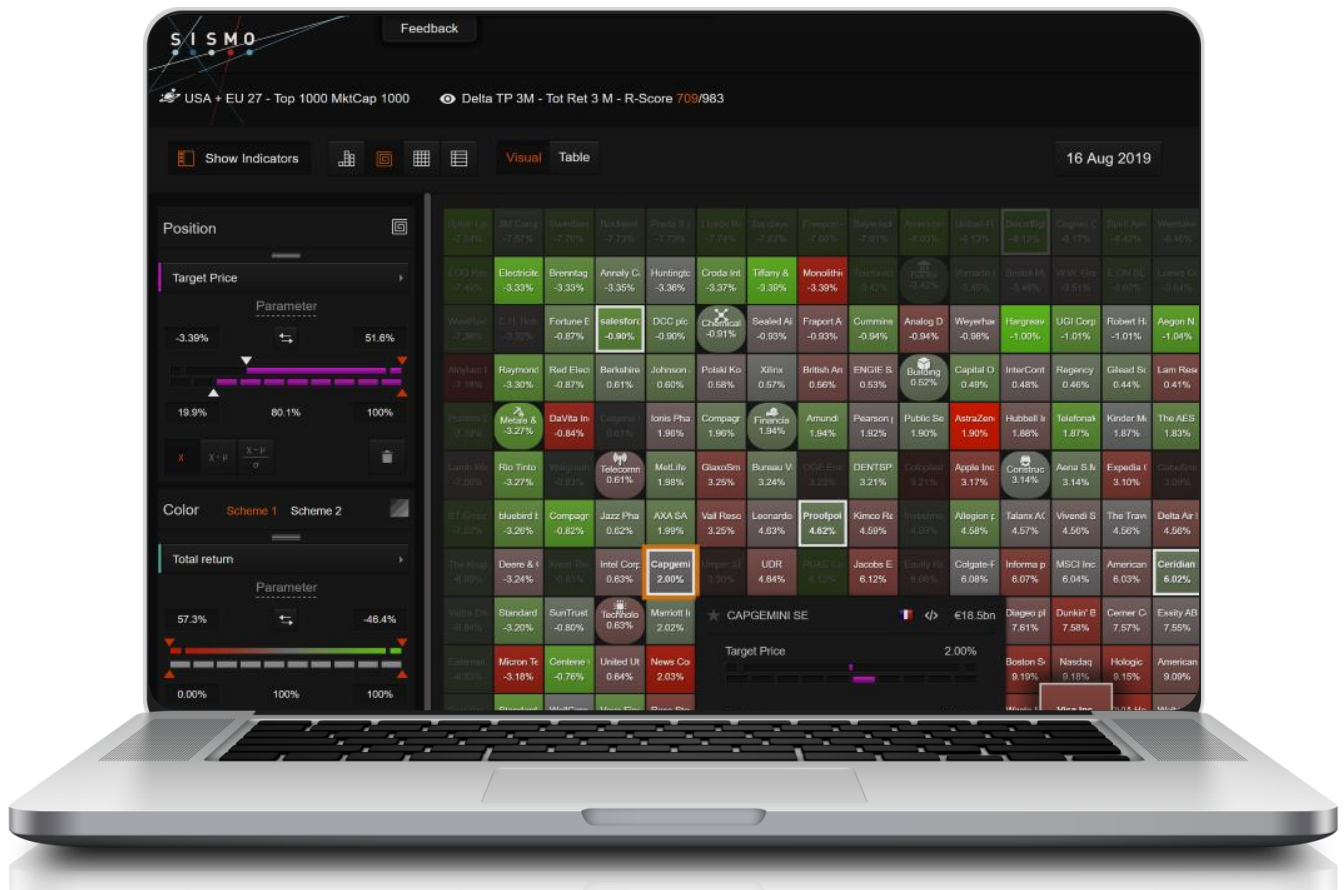


Get the Assistant Portfolio Manager you deserve, at your fingertips, right before your eyes



- Read your portfolio with powerful visual analytics on dynamic customized equity universes
- Spot and monitor market trends and outliers
- Screen stocks matching your own complex criteria and your own investment style
- Fingerprint portfolio and market exposures to common and user-defined investment style factors
- Test and adjust your investment strategy with innovative point-and-click back-testing tools and best fit recommendations
- Leverage your investment capabilities

## A “quantamental” visual platform exclusively designed for Portfolio Managers



100% web-based solution, giving you direct access to your own customized library of analyses



Pre-integrated with S&P Global equity coverage (2,500 European + 3,000 North American active stocks)



Allowing you to create relevant universes for dynamic screening on multiple common and proprietary indicators (expected return, best fit factor, etc.)



Explore data in all possible ways, check your intuitions, bounce off results in iterative manner with point-and-click back-tests and instant drill-down access to all historical data



Upload your portfolio and read its factors exposure to your equity universe or over time, on a stand-alone basis, across the investment cycle



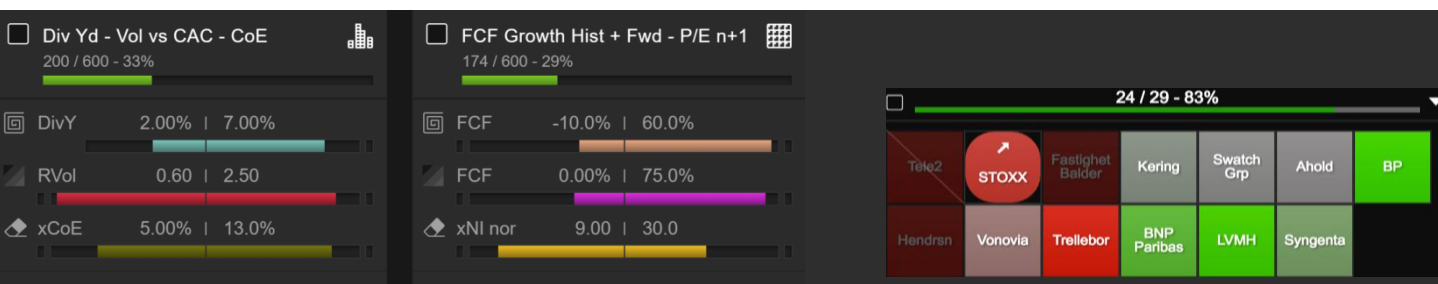
Turn your investment views into complex multi factor models in a few mouse clicks and visualize the results in minutes through striking displays of relative positions



Access portfolio recommendation and marginal optimization based on portfolio diagnostic. Build up alternative “what-if” investment scenarios



Iterate until you get the investment ideas that best fit your criteria or gain the comprehensive market understanding you are looking for



## Background - Emmanuel Dayan, CEO

How do we get financial professionals to grasp at a glance complex indicators? How do we bring perspective and context to proprietary measures of risk and return? How do we get a visual platform that would allow to switch instantly between multiple-stock comparisons and time-series visualizations to capture market dynamics?

Such were the challenges that arose in 2013 at the corporate valuation boutique I had founded in Paris. Our team of financial analysts had been on the lookout for smart tools to display our market indicators but couldn't find any. Tools available to analysts and portfolio managers appeared strikingly ill-adapted to contextual and comparative analysis, even though this is so critical to investment decision. On this evidence, we seized the opportunity to bring to the financial community a visual tool that would change the way information is accessed and absorbed.

We designed Sismo with the objective to bring at a glance to the investors' eyes the relative position of stocks on multiple indicators and their dynamics, out of relevant equity universes, with zero compromise on data accuracy.

Accessing appropriate comparative information is just the first step in investment decision. From there on,

we developed a seamless point-and-click user experience to dig into historical and prospective data, save and compare analyses with multiple iterations, define and back-test multi-factor strategies.

In early 2019, Sismo received the financial and operational backing of renowned asset management and IT services professionals\* and was geared up for fundamental portfolio managers, introducing insightful factor analysis and "quantamental" approach to traditional equity investors.

Sismo now offers automatic portfolio upload, standard and customized factor analysis as well as investment recommendations for marginal portfolio optimization.

With Sismo, we bring to the investment community an intuitive, versatile and scalable analytical solution, for improved investment strategies, in a highly competitive and cost-constraint environment.

\* Among our investors:

- Pierre Gatignol, co-founder of GL Trade, acquired by Sungard in 2008
- Didier Varlet, founder of Carr Futures
- Dominique Illien, former MD and Board member of Sopra-Steria
- Antoine Moreau, co-founder of Ossiam, an affiliate of Natixis IM
- Fabien Dornier, former CIO of Ossiam

# S I S M O

S&P Global  
Data Partner

To learn more please visit: [www.sismo.fr](http://www.sismo.fr)

Contact: Emmanuel Dayan  
[emmanuel.dayan@sismo.fr](mailto:emmanuel.dayan@sismo.fr)  
Tel. +33.6.30.41.30.91

Sismo SAS  
Le Village by CA  
55, rue La Boetie  
75008 Paris - France



“Data discovery and visualization tools will replace spreadsheets for identifying dependencies, patterns and trends, valuation analysis, and investment decision making”

Gabriel Lowy – Technology analyst – Tech-Tonics Advisor  
The Future of Equity Research: Meet the New Analyst – 29/12/2014

